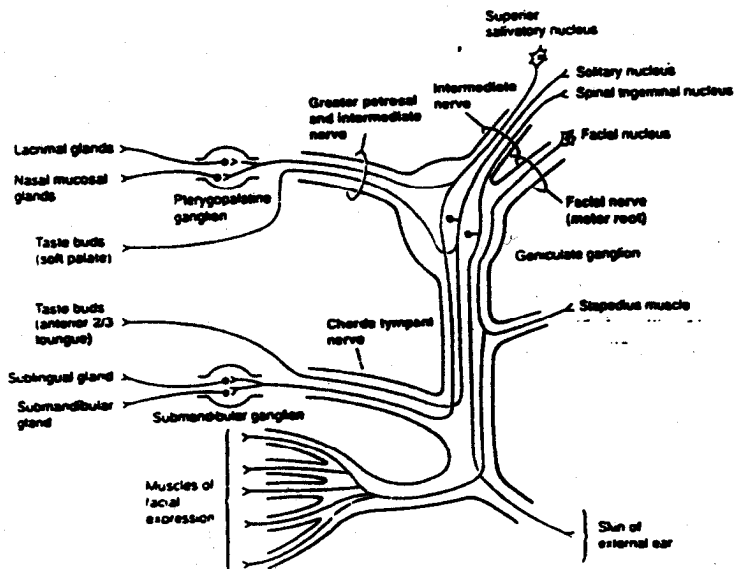
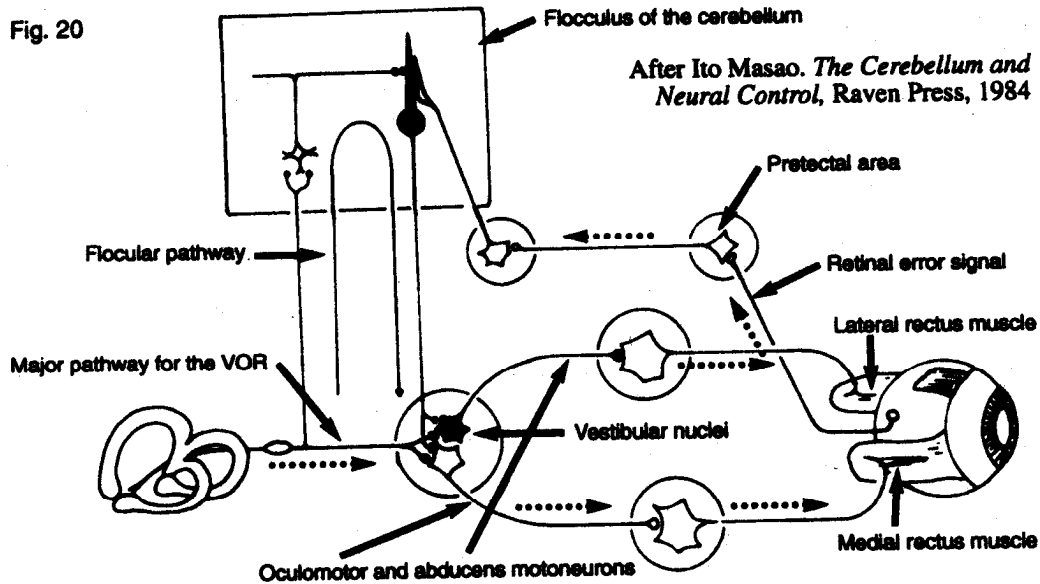


Warning: Though results will be seen very fast, the program needs to be done for several months, depending on the needs of the child. It is described fully in the video "Autism, neurological research and neurodevelopmental therapy." It is meant for any and all unexplained behavior problems on the autism spectrum.

Fig. 20



**FIGURE 44-6**  
The peripheral course of the facial nerve illustrates how cranial nerve fiber types can intermingle. The facial nerve and its intermediate branch as well as the petrosal and a branch of the trigeminal nerve (not shown) course together in the periphery.

From : Principles of Neural Science by Eric R. Kandel et al.